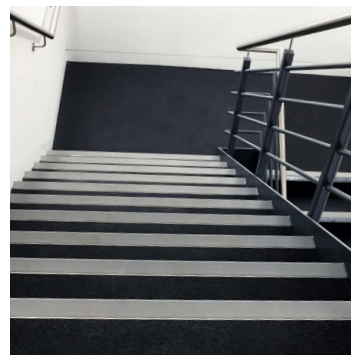


Accessories

Accessories Project: Ludgate Office, London



“ Our reputation for high-quality work is firmly established and we regularly undertake major commissions from leading construction companies. We know our reputation is only as good as our last project and we place client satisfaction at the top of our list, which is why we chose to work with Gradus, a trusted manufacturer with technical expertise. ”

Keith Stewart
The Roseville Group

New Ludgate, based in the heart of London, is a development of two office buildings that provide 349,555 sq ft of commercial office space, as well as retail and restaurant facilities. Occupying a unique island site, the two distinct buildings are united by a new public 'piazzetta' and offer outstanding work environments.

Working with The Roseville Group, Gradus installed ADXT1 stair edgings with xtra-grip, which wraps around the leading edge of the step edge, to ensure that foot contact is made with the slip-resistant element of the stair edging.

The stair edgings also meet the guidance in Approved Document M and BS8300:2009+A1:2010, which is designed to ensure buildings are suitable and inclusive for all users.

Anthony Roberts, Product Marketing Manager for Gradus, commented: "At Gradus we have extensive experience supplying commercial establishments and are ideally placed to help specifiers and project managers meet guidelines and create safe spaces through correct product specification.

The premium ADXT1 stair edgings we supplied to New Ludgate will help to reduce the risk of slips as well as prolong the life of the floorcovering."

Product Specified:

- XT Stair Edging with xtra-grip – ADXT1

